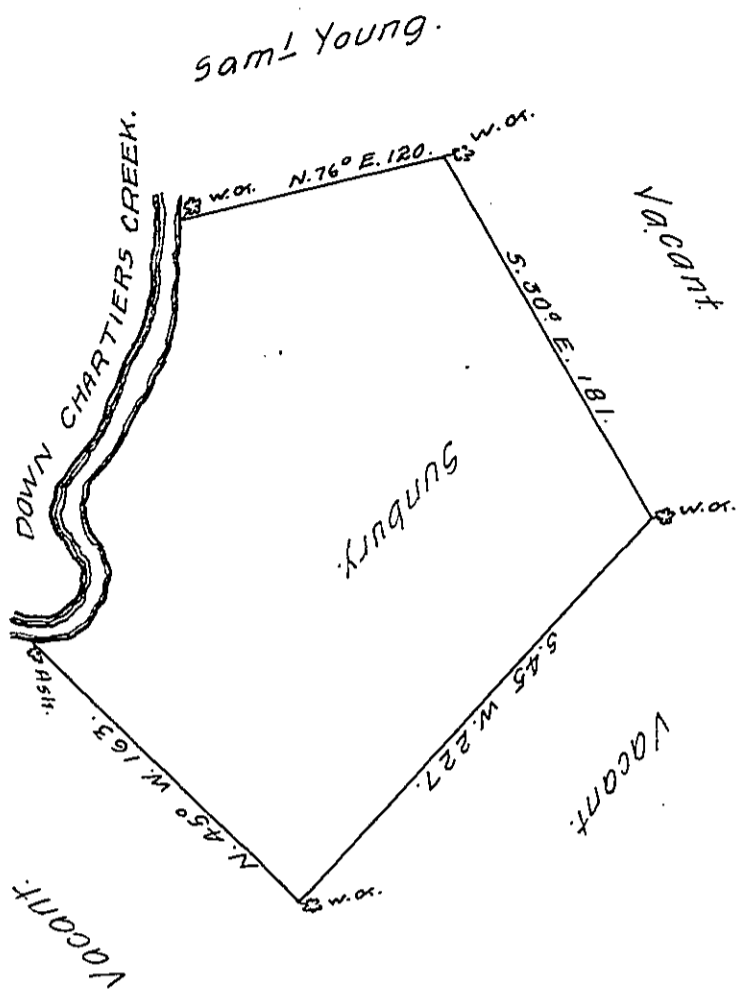


Courses down Chartiers Creek }
Beg. at an Ash & Run.

East	-----	16	⊘
N. 45°	E.	20	⊘
N. 21	E.	12	⊘
N. 25	W.	31	⊘
N. 45	E.	22	⊘
N. 16	E.	110	⊘
to a W.O.		211.	



In pursuance of an order N^o 3765 dated 26th August, 1769 the above is a draught of a tract of land called. Sunbury, situated on the West Side Monongahala- containing 291 " 3 " 13 acres with the usual allowance of 6 ⊘ C. for Roads, highways, &c. Survey'd for Thomas Thomas, 24th November, 1769

by.

To John Lukens, Esq^r;
Sur. Gen.

James Hendricks. —

IN TESTIMONY that the above is a copy of the original remaining on file in the Department of Internal Affairs of Pennsylvania, made conformably to an Act of Assembly approved the 16th day of February, 1833, I have hereunto set my Hand and caused the Seal of said Department to be affixed at Harrisburg, this second day of February 1911.

Henry Houck
Secretary of Internal Affairs.